

[Larval food plants are in square brackets]

Sesiidae

Red Maple Borer (*Synanthedon acerrubri*) [maple]

Pyralidae

Eastern Grass Veneer (*Crambus laqueatellus*) [grasses]

White-spotted Sable (*Anania funebris*) [goldenrod]

Grape Leaf-folder (*Desmia funeralis*) [many]

Depranidae

Rose Hooktip (*Oreta rosea*) [viburnum]*

Geometridae

Barberry Geometer (*Coryphista meadii*) [barberry]

White-ribboned Carpet (*Mesoleuca ruficillata*) [blackberry]

White-striped Black (*Trichodezia albovittata*) [impatiens]

Sweet Fern Geometer (*Cyclophora pendulinaria*) [many] *

Red-fringed Emerald (*Nemoria bistriaria*) [many]

Common Lytrosis (*Lytrosis unitaria*) [many, trees]

Crocus Geometer (*Xanthotype urticaria*) [many] *

Pale Beauty (*Campaea perlata*) [many, trees] *

Northern Pine Looper (*Caripeta piniata*) [pine]

Large Maple Spanworm (*Prochoerodes lineola*) [many]

Lasiocampidae

Lappet Moth (*Phyllodesma americana*) [many, trees/shrubs]

Forest Tent Caterpillar Moth (*Malacosoma disstria*) [many, trees]

Eastern Tent Caterpillar Moth (*Malacosoma americana*) [many, trees]

Saturniidae

Rosy Maple Moth (*Dryocampa rubicunda*) [maple+] *

Luna Moth (*Actias luna*) [many, trees]

Promethea Moth (*Callosamia promethea*) [many, trees/shrubs] *

Cecropia Moth (*Hyalophora cecropia*) [many, trees/shrubs]

Sphingidae

Waved Sphinx (*Ceratomia undulosa*) [many, trees] *

Northern Pine Sphinx (*Lapara bombycoides*) [pine]

Blinded Sphinx (*Paonias excaecata*) [many, trees]

Hummingbird Clearwing (*Hemaris thysbe*) [many] *

Nessus Sphinx (*Amphion floridensis*) [grape+] *

Notodontidae

Black-rimmed Prominent (*Pheosia rimosa*) [poplar/willow]

White-headed Prominent (*Symmerista albifrons*) [oak]

Lymantriidae

Gypsy Moth (*Lymantria dispar*) [oak+]

White-marked Tussock Moth (*Orgyia leucostigma*) [many, trees]

Arctiidae

Painted Lichen Moth (*Hypoprepia fucosa*) [lichen/moss] *

Virgin Tiger Moth (*Grammia virgo*) [many, low plants]

Isabella Tiger Moth (*Pyrrharctia isabella*) [many] *
 Clymene Moth (*Haploa clymene*) [many] *
 The Neighbor (*Haploa contigua*) [trembling aspen]
 Delicate Cynia (*Cynia tenera*) [milkweed] *
 Milkweed Tussock Moth (*Euchaetes egle*) [milkweed] *
 Virginia Ctenucha (*Ctenucha virginica*) [many] *

Noctuidae

Sweet Fern Underwing (*Catocala antinympha*) [sweet fern] *
 White Underwing (*Catocala relictata*) [poplar/willow] *
 Figure-Seven Moth (*Drasteria grandirena*) [witch hazel]
 Lunate Zale (*Zale lunata*) [many]
 Eyed Paectes (*Paectes oculatrix*) [poison ivy] *
 Beautiful Eutelia (*Eutelia pulcherrimus*) [poison sumac]
 Eastern Panthea (*Panthea furcilla*) [conifers]
 Green Marvel (*Agriopodes fallax*) [viburnum]
 Tufted Bird-dropping Moth (*Cerma cerintha*) [apple, cherry] *
 Pearly Wood Nymph (*Eudryas unio*) [low plants, vines]

Eight-spotted Forester (*Alypia octomaculata*) [vines]
 Primrose Moth (*Schinia florida*) [evening primrose] *
 Silver-spotted Fern Moth (*Calloplistria cordata*) [ferns] *
 Olive Angle Shades (*Phlogophora iris*) [low plants]
 Sensitive Fern Borer (*Papaipema inguaesita*) [sensitive fern]

*Most likely to be encountered, as larvae or adults during daylight hours at the East Leverett Meadow.

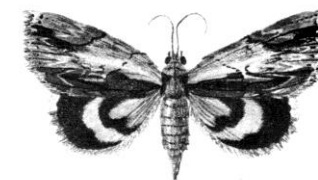
Field Guides to Moths

Beadle, David & Seabrooke Leckie. 2012. *Peterson Field Guide to Moths of Northeastern North America*. Houghton Mifflin Harcourt: Boston/New York.

Covell, Charles V. Jr. 1984. *A Field Guide to the Moths of Eastern North America*. Houghton Mifflin Company: Boston. [Reprinted (with revisions), 2005. Virginia Museum of Natural History.]

MOTHS OF LEVERETT

This is a very partial list of species known to occur in Leverett, MA – with special reference to East Leverett Meadow – emphasizing particularly striking and/or ecologically interesting examples.



Special thanks to:

Ted Sargent for this list and for the longer, more complete list which is available on the RGT website: www.rattlesnakeguttertrust.org/events

and to Kathy Doktor-Sargent for her illustration of the Ultonia Underwing.